

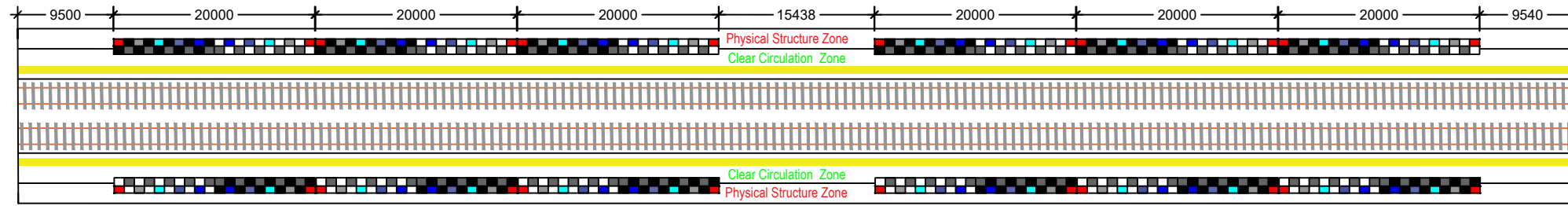
URBAN DEPARTMENT

DRAWING NUMBER	NAME OF DRAWING	DRAWN BY
001	PLATFORM SHELTER PLAN VIEW	YUXUAN DU
002	BARRIER LAYOUT, PLAN, ELEVATION & REINFORCEMENT DETAILS	DINO L ANZELLOTTI
003	PLATFORM LAYOUT PLAN & LIGHTING POLE DETAILS	RUP N GAUTAM
004	PLATFORM SHELTER LAYOUT AND ELEVATIONS	YONGJI DUAN

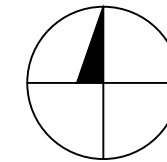
THIS DOCUMENT HAS BEEN DEVELOPED BY STUDENTS FROM THE UNIVERSITY OF SOUTH AUSTRALIA AS PART OF THE CIVIL ENGINEERING DESIGN PROJECT COURSE. THIS DOCUMENT AND ANY ASSOCIATED WORKS RELATING TO IT IS FOR THE PURPOSES OF ACADEMIC STUDY ONLY AND DOES NOT REPRESENT THE VIEWS OR OPINIONS OF THE END CLIENT, (DEPARTMENT OF PLANNING TRANSPORT AND INFRASTRUCTURE (DPTI))

REVISION NO.	REVISION DESCRIPTION	REVISION DATE	BY:	VERIFIED BY:	APPROVED BY:	 Government of South Australia Department of Planning, Transport and Infrastructure	 University of South Australia	 DPC A Difference in Thinking	PROJECT:	DRAWN BY: TSHERING PENJOR	SIGNED: TP	DATE: 10.06.2017	DRAWING TITLE: COVER			
												VERIFIED BY: TSHERING PENJOR	SIGNED: TP	DATE: 12.06.2017	PROJECT NUMBER: 0617-001	
												CHECKED BY: DINO L ANZELLOTTI	SIGNED: DLA	DATE: 12.06.2017	DRAWING NUMBER: 000	REVISION:
												APPROVED BY:	SIGNED:	DATE:	SCALE: NTS	

OAKLANDS PARK TRAIN GRADE SEPARATION - DIAGONAL AND MORPHETT ROADS

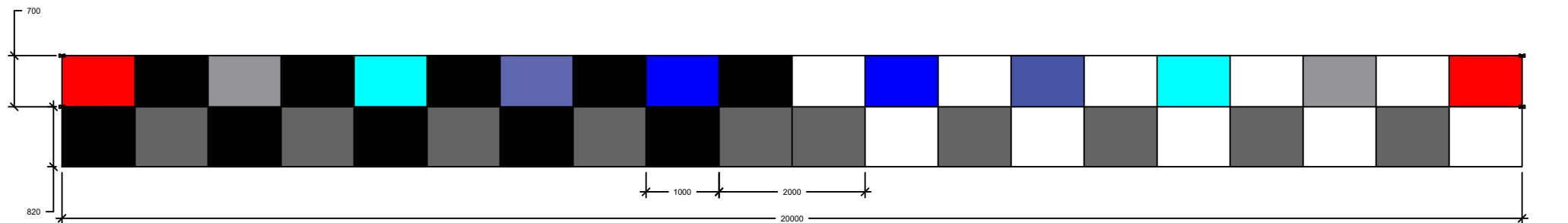


PLATFORM SHELTER PLAN VIEW

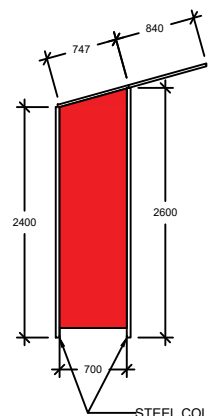


PLATFORM SHELTER PLAN VIEW

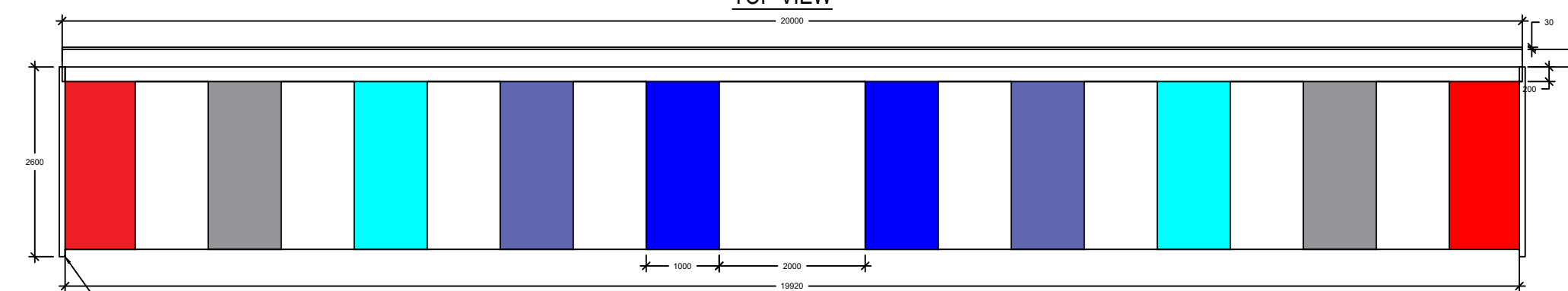
SCALE: 1:15000



TOP VIEW



SIDE VIEW



FRONT VIEW



TOP, FRONT AND SIDE VIEWS OF SHELTER
SCALE: 1:2000

ALL DIMENSIONS IN MM

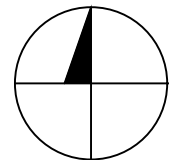
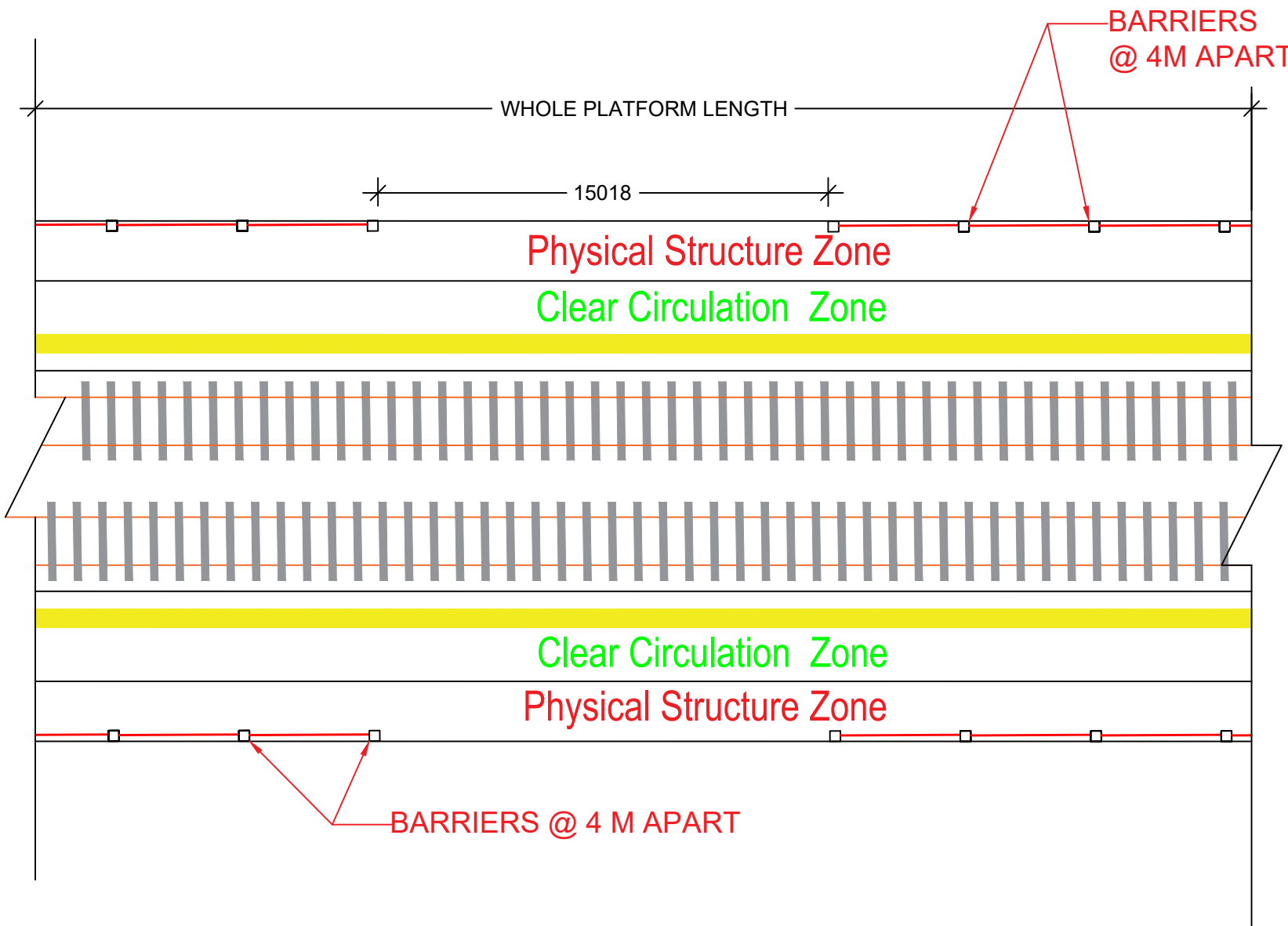
REVISION NO.	REVISION DESCRIPTION	REVISION DATE	BY:	VERIFIED BY:	APPROVED BY:



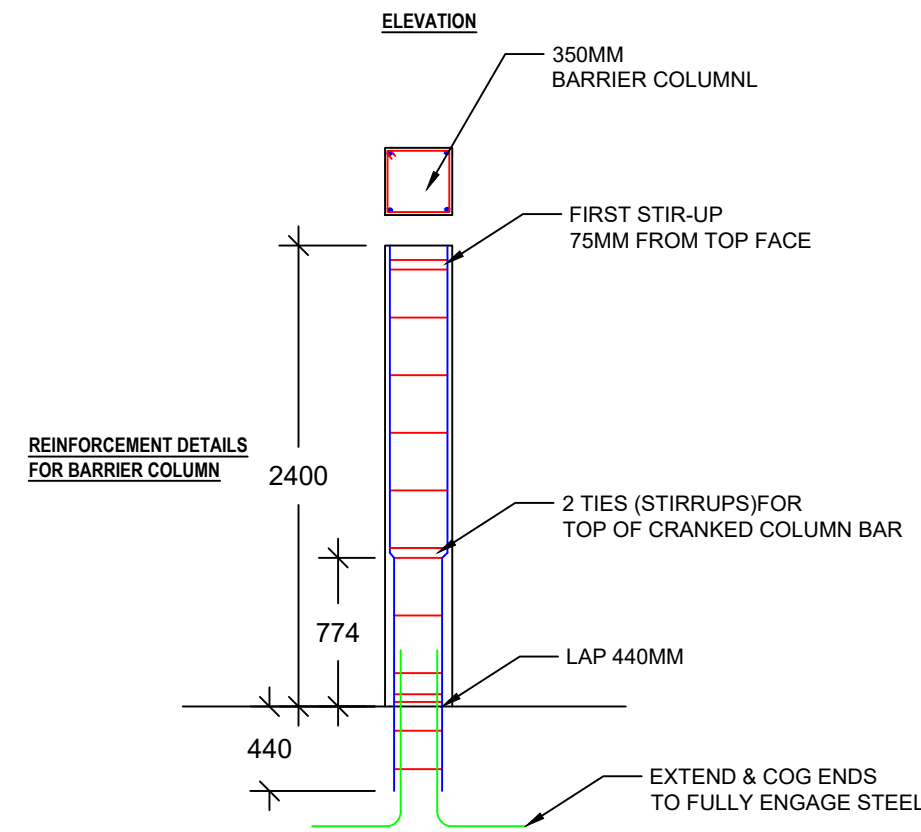
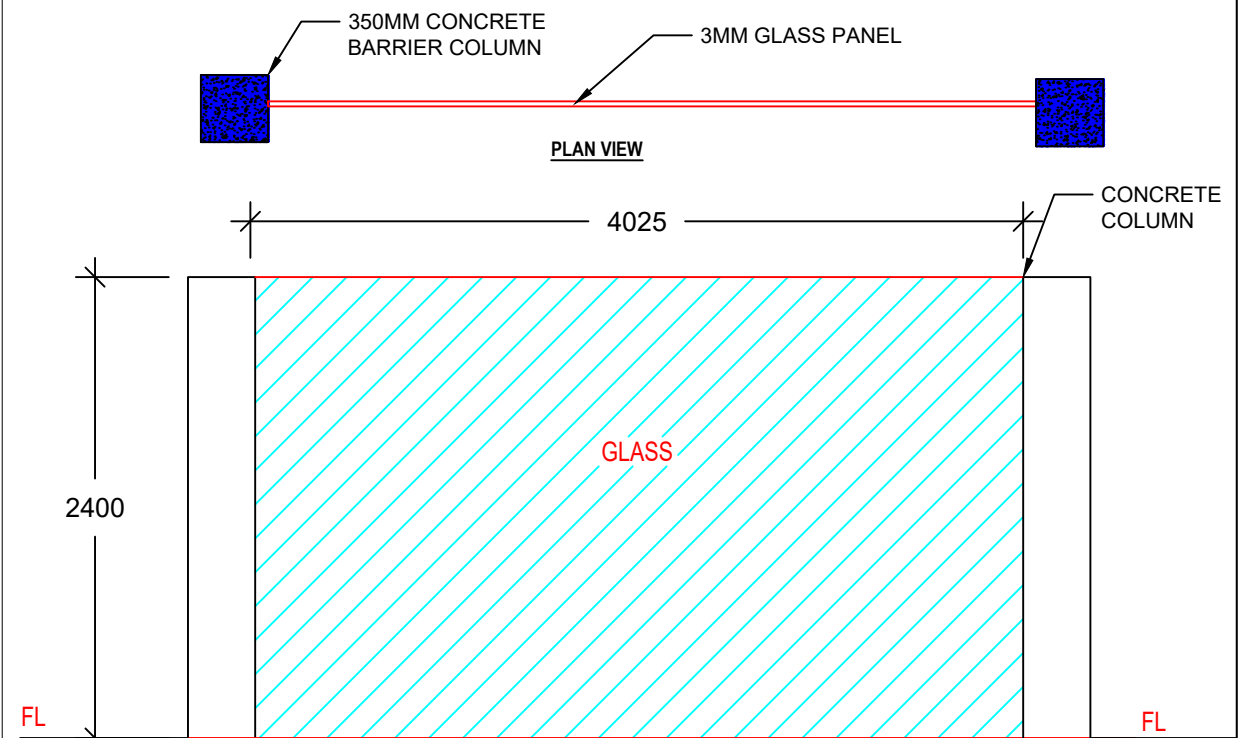
PROJECT:
OAKLANDS PARK TRAIN
GRADE SEPARATION -
DIAGONAL AND
MORPHETT ROADS

DRAWN BY: YUXUAN DU	SIGNED: YD	DATE: 10.06.2017	DRAWING TITLE: PLATFORM SHELTER LAYOUT AND ELEVATIONS	
VERIFIED BY: TSHERING PENJOR	SIGNED: TP	DATE: 12.06.2017	PROJECT NUMBER: 0617-001	REVISION:
CHECKED BY: DINO L ANZELLOTTI	SIGNED: DLA	DATE: 12.06.2017	DRAWING NUMBER: 001	
APPROVED BY:	SIGNED:	DATE:	SCALE: AS SHOWN	

THIS DOCUMENT HAS BEEN DEVELOPED BY STUDENTS FROM THE UNIVERSITY OF SOUTH AUSTRALIA AS PART OF THE CIVIL ENGINEERING DESIGN PROJECT COURSE. THIS DOCUMENT AND ANY ASSOCIATED WORKS RELATING TO IT IS FOR THE PURPOSES OF ACADEMIC STUDY ONLY AND DOES NOT REPRESENT THE VIEWS OR OPINIONS OF THE END CLIENT, (DEPARTMENT OF PLANNING TRANSPORT AND INFRASTRUCTURE (DPTI))



PLATFORM BARRIER LAYOUT
SCALE: 1:5000



BARRIER ELEVATION, PLAN & RIO. DETAILS
SCALE: 1:1000

ALL DIMENSIONS IN MM

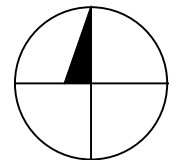
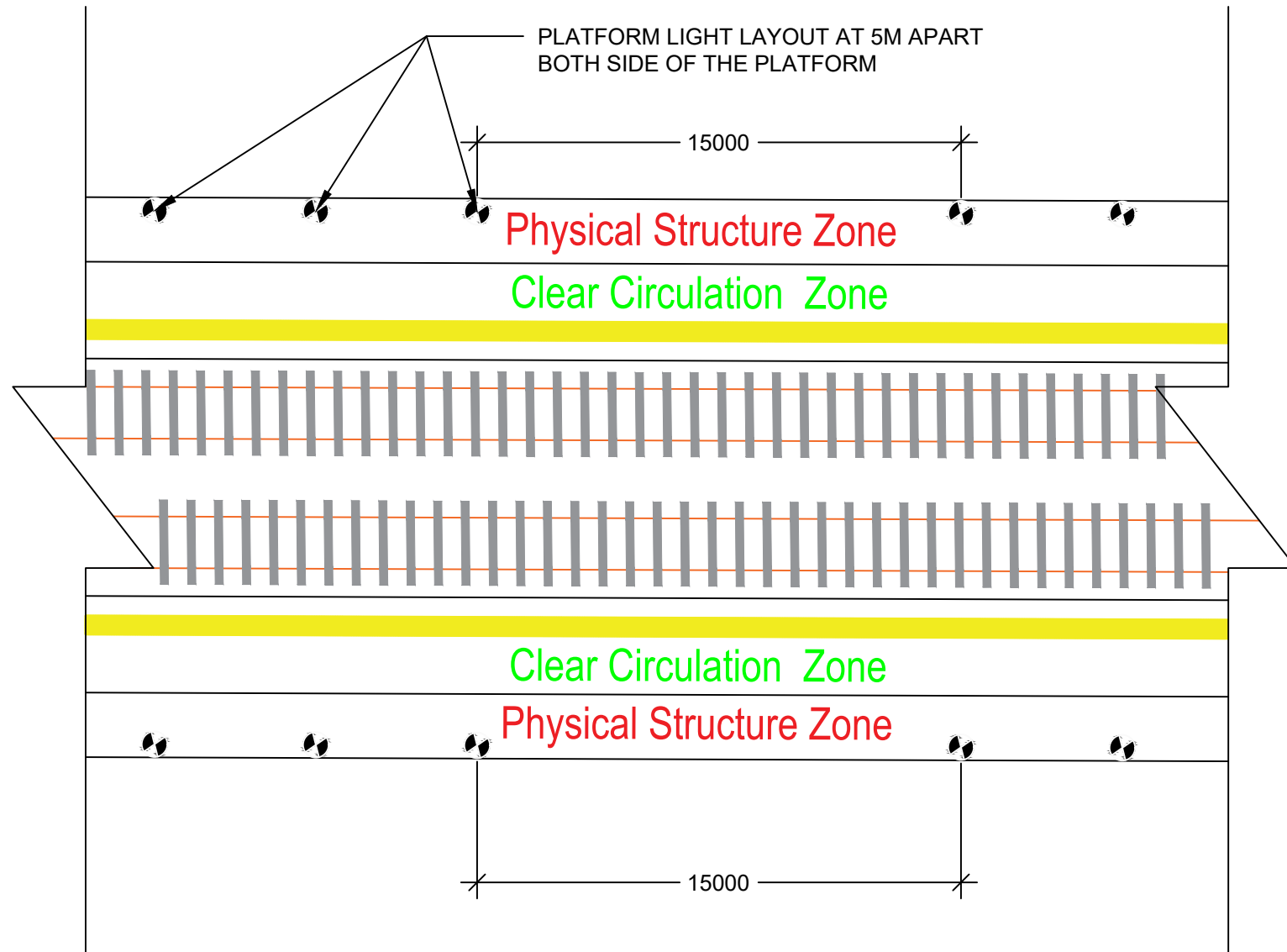
REVISION NO.	REVISION DESCRIPTION	REVISION DATE	BY:	VERIFIED BY:	APPROVED BY:



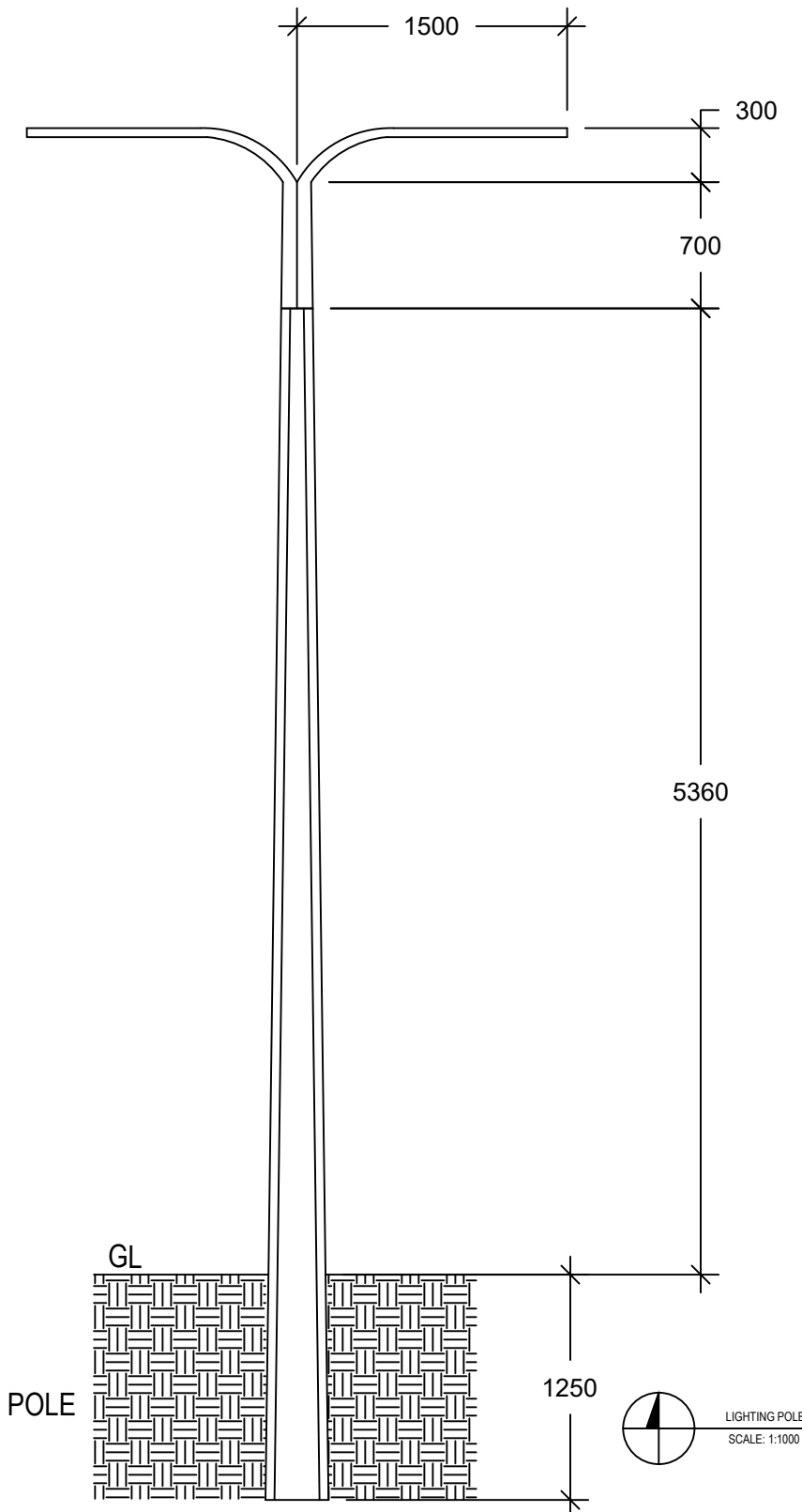
PROJECT:
OAKLANDS PARK TRAIN
GRADE SEPARATION -
DIAGONAL AND
MORPHETT ROADS

DRAWN BY: DINO L ANZELLOTTI	SIGNED: DLA	DATE: 10.06.2017	DRAWING TITLE: BARRIER LAYOUT, PLAN, ELEVATION & REINFORCEMENT DETAILS	
VERIFIED BY: TSHERING PENJOR	SIGNED: TP	DATE: 12.06.2017	PROJECT NUMBER: 0617-001	
CHECKED BY: DINO L ANZELLOTTI	SIGNED: DLA	DATE: 12.06.2017	DRAWING NUMBER: 002	REVISION:
APPROVED BY:	SIGNED:	DATE:	SCALE:	AS SHOWN

THIS DOCUMENT HAS BEEN DEVELOPED BY STUDENTS FROM THE UNIVERSITY OF SOUTH AUSTRALIA AS PART OF THE CIVIL ENGINEERING DESIGN PROJECT COURSE. THIS DOCUMENT AND ANY ASSOCIATED WORKS RELATING TO IT IS FOR THE PURPOSES OF ACADEMIC STUDY ONLY AND DOES NOT REPRESENT THE VIEWS OR OPINIONS OF THE END CLIENT, (DEPARTMENT OF PLANNING TRANSPORT AND INFRASTRUCTURE (DPTI))



PLATFORM LIGHTING LAYOUT
SCALE: 1:5000



LIGHTING POLE DETAILS
SCALE: 1:1000

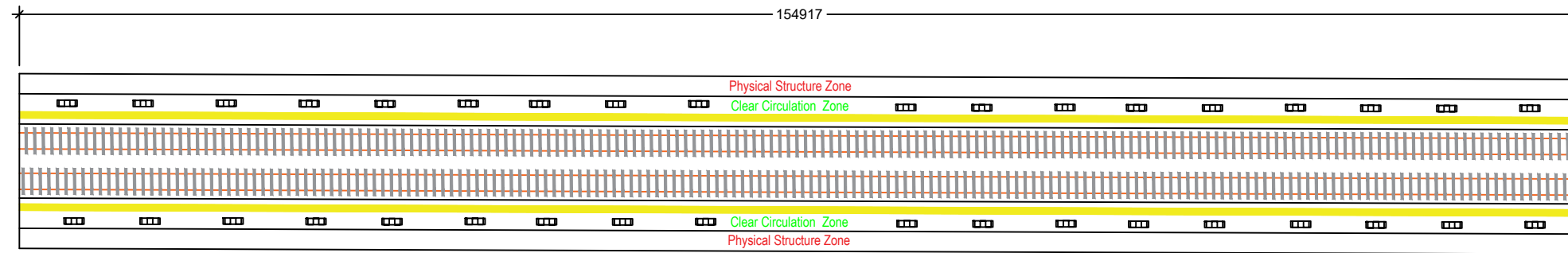
ALL DIMENSIONS IN MM

REVISION NO.	REVISION DESCRIPTION	REVISION DATE	BY:	VERIFIED BY:	APPROVED BY:



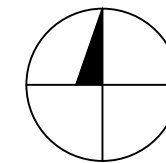
PROJECT:
OAKLANDS PARK TRAIN GRADE SEPARATION - DIAGONAL AND MORPHETT ROADS

DRAWN BY: RUP N GAUTAM	SIGNED: RNG	DATE: 10.06.2017	DRAWING TITLE: PLATFORM LAYOUT PLAN & LIGHTING POLE DETAILS	
VERIFIED BY: TSHERING PENJOR	SIGNED: TP	DATE: 12.06.2017	PROJECT NUMBER: 0617-001	
CHECKED BY: DINO L ANZELLOTTI	SIGNED: DLA	DATE: 12.06.2017	DRAWING NUMBER: 003	REVISION:
APPROVED BY:	SIGNED:	DATE:	SCALE:	AS SHOWN



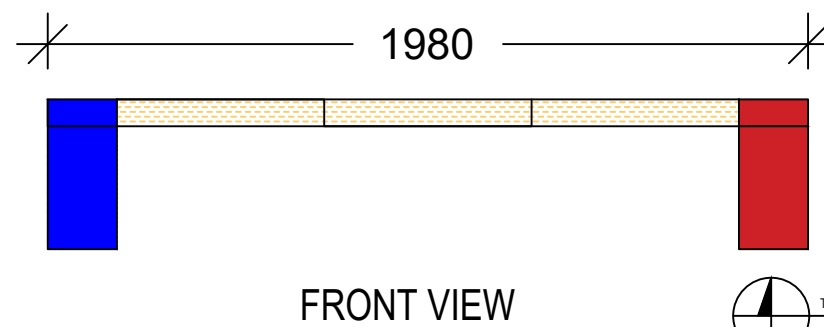
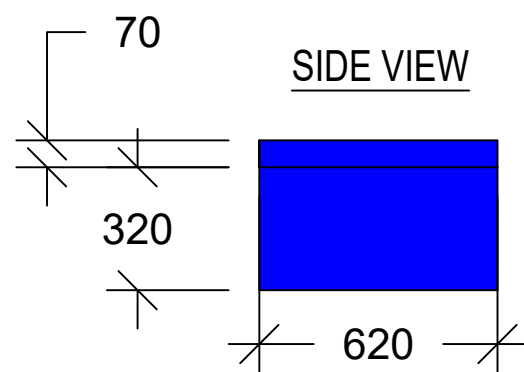
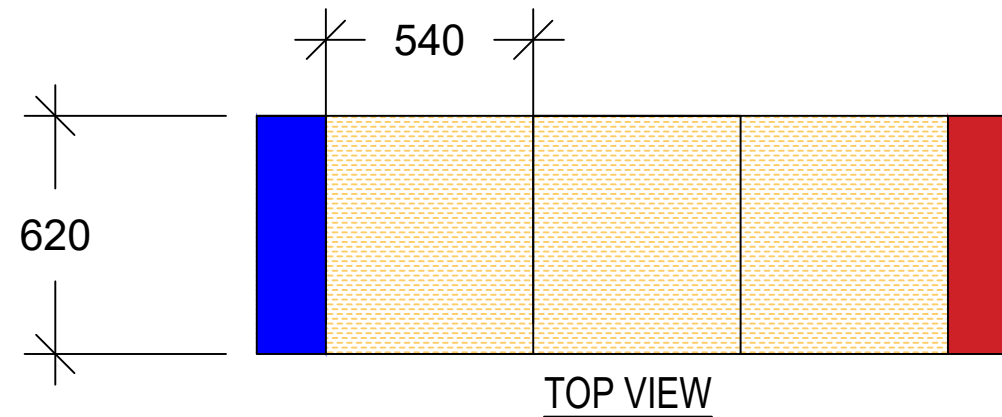
- SPACING BETWEEN EACH BENCH IS 6M
- SPACING OF BENCH FOR THE EDGE OF THE PLATFORM IS 4M

PLATFORM BENCH PLAN VIEW



PLATFORM SHELTER PLAN VIEW
SCALE: 1:15000

BENCH TOP & SIDE & FRONT VIEWS



TOP, FRONT AND SIDE VIEWS OF BENCHES
SCALE: 1:500

ALL DIMENSIONS IN MM

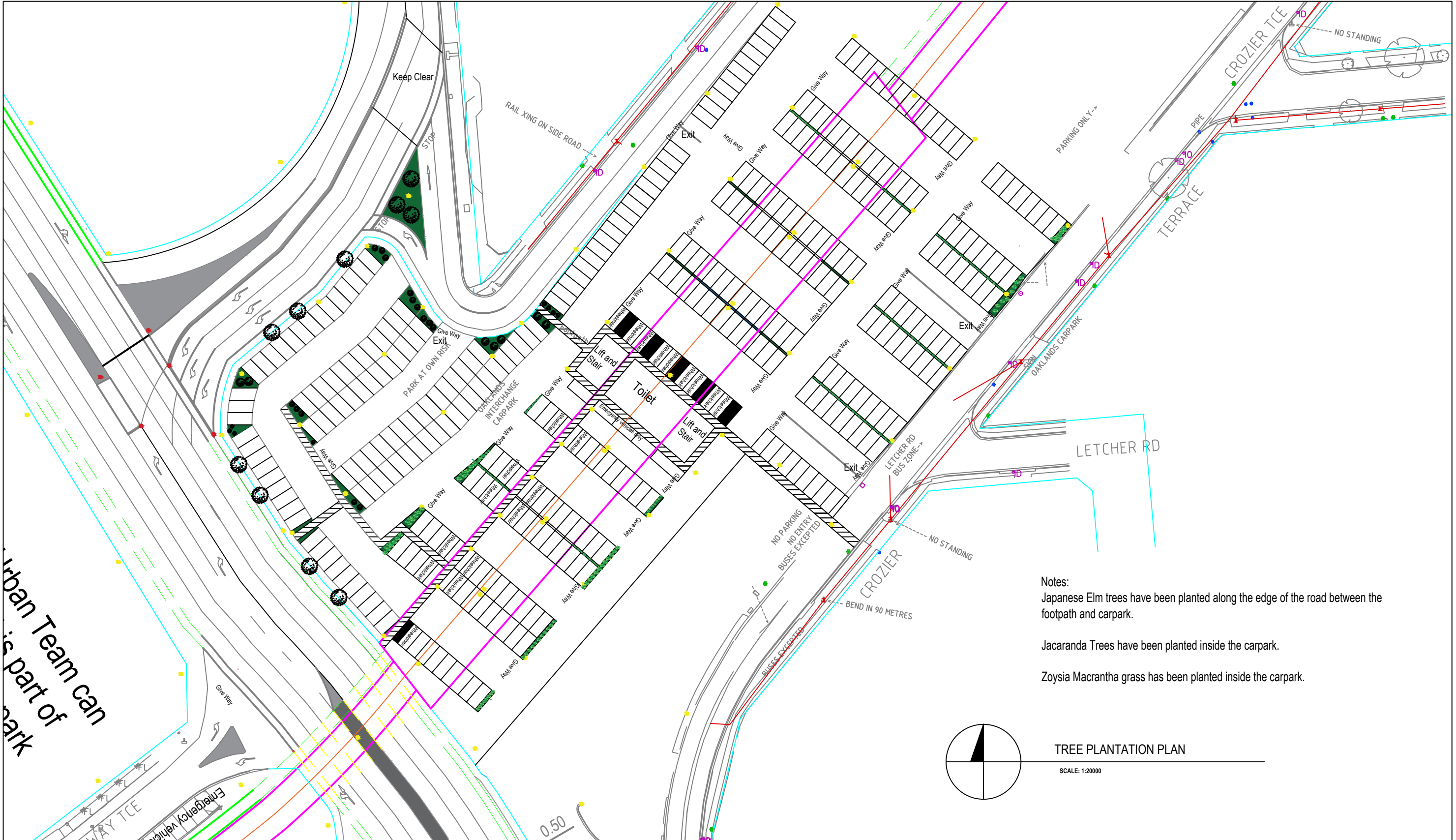
REVISION NO.	REVISION DESCRIPTION	REVISION DATE	BY:	VERIFIED BY:	APPROVED BY:



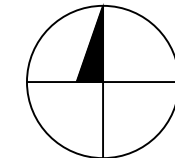
PROJECT:
OAKLANDS PARK TRAIN
GRADE SEPARATION -
DIAGONAL AND
MORPHETT ROADS

DRAWN BY: YONGJI DUAN	SIGNED: YD	DATE: 10.06.2017	DRAWING TITLE: PLATFORM SHELTER LAYOUT AND ELEVATIONS	
VERIFIED BY: TSHERING PENJOR	SIGNED: TP	DATE: 12.06.2017	PROJECT NUMBER: 0617-001	REVISION:
CHECKED BY: DINO L ANZELLOTTI	SIGNED: DLA	DATE: 12.06.2017	DRAWING NUMBER: 004	
APPROVED BY:	SIGNED:	DATE:	SCALE: AS SHOWN	

THIS DOCUMENT HAS BEEN DEVELOPED BY STUDENTS FROM THE UNIVERSITY OF SOUTH AUSTRALIA AS PART OF THE CIVIL ENGINEERING DESIGN PROJECT COURSE. THIS DOCUMENT AND ANY ASSOCIATED WORKS RELATING TO IT IS FOR THE PURPOSES OF ACADEMIC STUDY ONLY AND DOES NOT REPRESENT THE VIEWS OR OPINIONS OF THE END CLIENT, (DEPARTMENT OF PLANNING TRANSPORT AND INFRASTRUCTURE (DPTI))



- Notes:
- Japanese Elm trees have been planted along the edge of the road between the footpath and carpark.
 - Jacaranda Trees have been planted inside the carpark.
 - Zoysia Macrantha grass has been planted inside the carpark.



TREE PLANTATION PLAN

SCALE: 1:20000

REVISION NO.	REVISION DESCRIPTION	REVISION DATE	BY:	VERIFIED BY:	APPROVED BY:



PROJECT:
**OAKLANDS PARK TRAIN
 GRADE SEPARATION -
 DIAGONAL AND
 MORPHEM ROADS**

DRAWN BY: SAEEDI, MALIHA	SIGNED: SM	DATE: 08.06.2017	DRAWING TITLE: TREE PLANTATION PLAN	
VERIFIED BY: JOEL	SIGNED:	DATE:	PROJECT NUMBER: 0617-001	
CHECKED BY: TSHERING PENJOR	SIGNED: TP	DATE: 10.06.2017	DRAWING NUMBER: 001	REVISION:
APPROVED BY:	SIGNED:	DATE:	SCALE:	AS SHOWN